

Revolutionize how you bring products to market!



MapleSim™ 2

High-Performance Multi-Domain Modeling and Simulation

Now Available

MapleSim™ is a high-performance tool for multi-domain physical modeling and control systems development. The world's most advanced symbolic computing engine comes together with traditional numeric solvers to supercharge the simulation and modeling process.

To request a free evaluation copy of MapleSim 2, go to www.maplesoft.com/maplesim

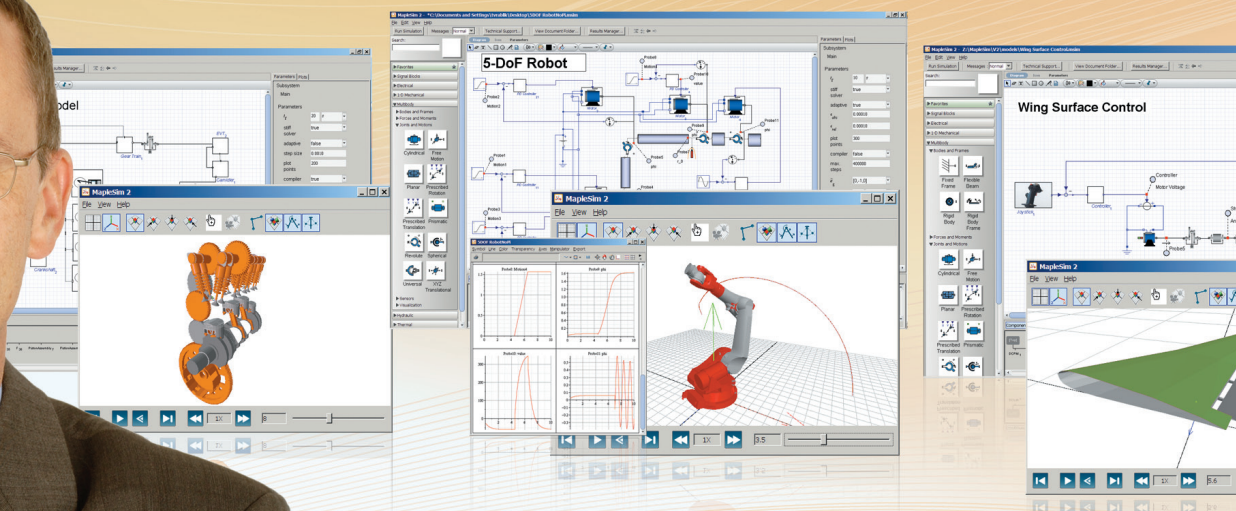
Key Advantages of MapleSim:

- Mix physical components with signal-flow blocks
- Multi-domain models are assembled from pre-built components
- Model diagrams map onto the real system
- System equations are automatically generated and optimized
- Integrated with powerful analysis and documentation tools
- 3-D animation delivers immediate insight

What's New in MapleSim 2:

- 3-D Visualization and Animations: Transform your multibody models into realistic animations
- Result Management Tools: Easily manage the results from multiple simulations

Request your free evaluation copy of MapleSim 2!
Go to www.maplesoft.com/maplesim



Maplesoft
Mathematics • Modeling • Simulation

www.maplesoft.com | info@maplesoft.com
Toll-free: (US & Canada) 1-800-267-6583
Direct: 1-519-747-2373

© Maplesoft, a division of Waterloo Maple Inc., 2009. Maplesoft, Maple, and MapleSim are trademarks of Waterloo Maple Inc. All other trademarks are the property of their respective owners.

Distributed in Italy by:

teoresi
group

teoresi s.r.l. ■ via perugia, 24 ■ 10152 torino (italy)
tel. + 39 011.240.80.00 ■ fax +39 011.240.80.24
maple@teoresi.it ■ www.teoresigroup.it